

# Development of Spanish PPG Stimuli and The Unique Contributions of PPG to the Assessment & Treatment of Sexual Offenders

A Presentation by  
Peter M. Byrne, Ph.D.

February, 2008

Peter M. Byrne, Ph.D.,  
dr.byrne@btmanarch.com

1

---

---

---

---

---

---

---

---

## Introduction

- Provide Information on Development of Spanish PPG Stimuli
- Deviance Differential Still "Empirical Heart" of PPG
- A New Definition for "Deviant Arousal"
- PPG May Also Inform On STABLE Clinical Factors Associated With Sexual Offender Treatment Need Besides Pedophilia

2

---

---

---

---

---

---

---

---

## Spanish Stimuli Development

- Hispanic Population Rapidly Growing
- Many Have Spanish As First or Only Language
- Impetus On Providers to Have Linguistically and Culturally Relevant Testing Materials
- PPG One of Best Predictors of Sexual Offense Recidivism

3

---

---

---

---

---

---

---

---

### Spanish Stimuli Development

- Cultural Differences May Play a Role in Motives in Offending
- Typical Stimulus Development Versus The "Translation" Approach
- Decided on "Translation" Due to Lack of Empirical Investigation and Also Time/Resource Considerations

4

---

---

---

---

---

---

---

---

### Spanish Stimuli "Translation" Approach

- Target Was Mexican American Dialect
- Explained Philosophy of Stimuli and Employed Translator
- Cultural as Well As Linguistic Translation
- Hired Professional Mexican American Actor and Hispanic Project Director

5

---

---

---

---

---

---

---

---

### Spanish Stimuli "Translation" Approach

- Actor/Director Provided "Validity Check" to Initial Interpretation
- Recorded Scripts to 85 Second Time Limit
- Integrated Scripts with Current Visuals
- Maintain Projective Non-Pornographic Approach In Order to Avoid Ethical Problems

6

---

---

---

---

---

---

---

---

### Current Status

- Sample
- Stimuli Not Yet Released for Clinical Use, As Still Collecting Initial Research Data

7

---

---

---

---

---

---

---

---

### Unique Contributions of PPG

- PPG is the Only Methodology with an *Empirical & Replicated* Link (e.g. **Evidence Based**) to Recidivism (Hanson & Bussiere, 1998; Hanson & Morton, 2004)
- Deviant Responding on PPG (more arousal to children than adults) Found to be One of Best Predictors of Recidivism

8

---

---

---

---

---

---

---

---

### Current Definition for Deviant Arousal

- Deviant Arousal Defined via "Deviance Differential"; Comparing Adult to Child Arousal
- Many Formulas From Literature
- I Settled On One via Empirical Procedures
- Expressed in Format of Standard Ipsative Z-scores

9

---

---

---

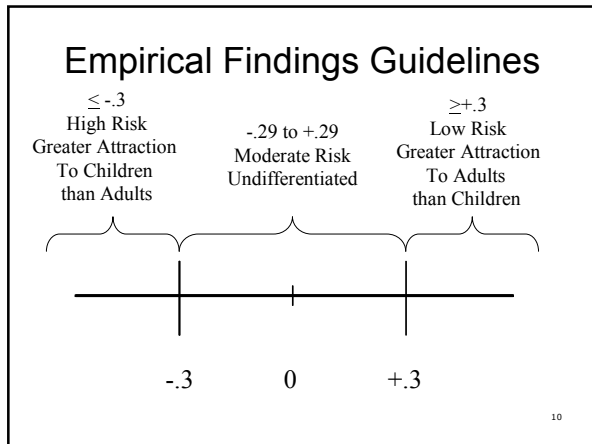
---

---

---

---

---



---

---

---

---

---

---

---

---

- ### Empirical Findings - Treatment
- The Empirical Findings Refer to Deviance Differential, Which Compares Adult to Child Responding
  - Treating Deviance Differential Issues is Typically Done via Behavioral Interventions
  - In Risk/Treatment Need, The Standard is to Match Treatment Need and Level of Intervention: Mismatches Increase Recidivism!!
- 11

---

---

---

---

---

---

---

---

- ### Clinical Findings
- If Client is Not Primarily Aroused to Children, What Was Motive in Offending?
  - Conceptually Useful to Move Away from or Re-define "Deviant Arousal"
  - Sex Offender Research Dependent Variable Has Been Focused on Static Recidivism Variables
  - Shift is Now on to Stable/Dynamic Variables Informing on Treatment Need & Risk
- 12

---

---

---

---

---

---

---

---

### Clinical Findings

- Need A Measure That Is Objective, Sexual, and Informs on Stable/Dynamic Factors
- Need Good Baseline
- Need Follow up Data To Examine for Treatment Gain
- PPG May Fill These Needs

13

---

---

---

---

---

---

---

---

### Clinical Findings

- Re-Conceptualization What PPG Measures: A Developmental Perspective Is Necessary
  - Incorporation of Sex and Intimacy Into Identity
  - Intimacy Deficits
  - Attachment/Trauma
- All of the Above are Sources of Cognitive Distortions/Thinking Errors/Defenses
- Bob Card Story, Personality Data From Monarch PPG Data

14

---

---

---

---

---

---

---

---

### Pathways of Offending (Ward & Siegert, 2002)

- **Intimacy Deficits**
  - **High** to objectified presentations of adult females; **Low** to interpersonal of adult females
    - Anxiety responses to adult female stimuli
- In Monarch 21 PPG Referred to as "Mapping the Adult Female Arousal"

15

---

---

---

---

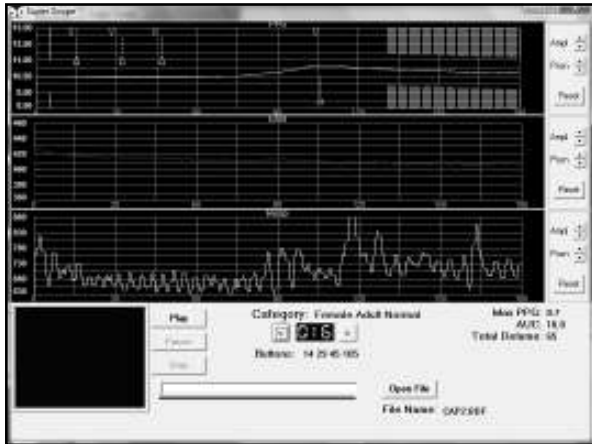
---

---

---

---






---

---

---

---

---

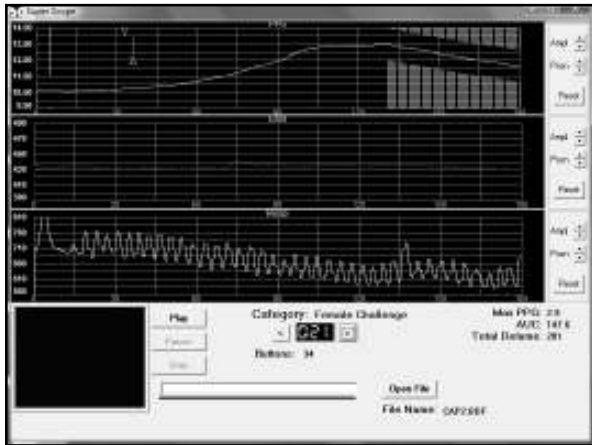
---

---

---

---

---




---

---

---

---

---

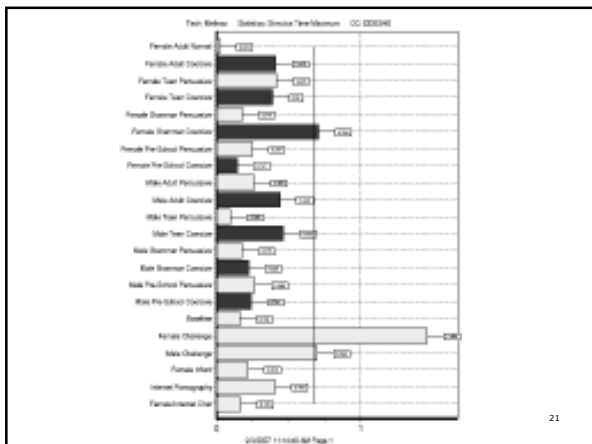
---

---

---

---

---




---

---

---

---

---

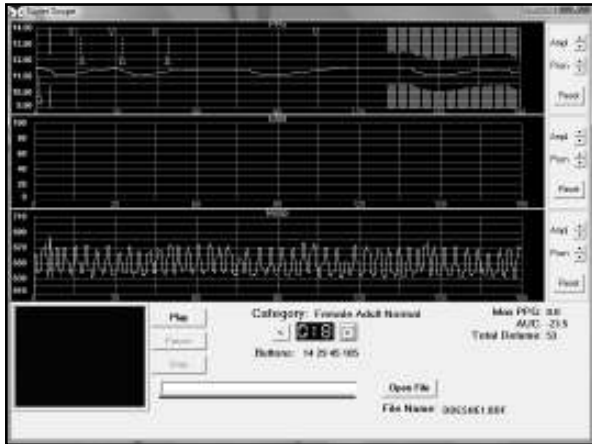
---

---

---

---

---



---

---

---

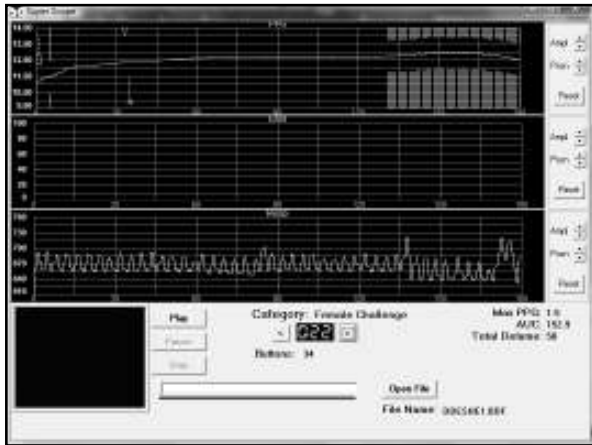
---

---

---

---

---



---

---

---

---

---

---

---

---

**Deviant Sexual Scripts**

- Coercive  $\geq$  Persuasive (regardless of violence history)
- Disruptions in Attachment Due to Trauma
- SC and DC Data

24

---

---

---

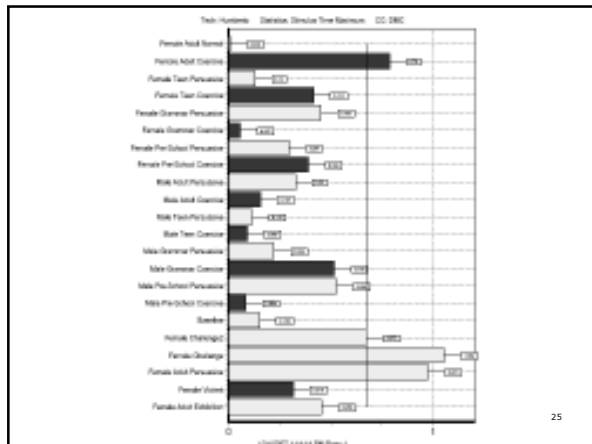
---

---

---

---

---




---

---

---

---

---

---

---

---

---

---

- Deviance Differential: 0.0149
- C/P Differential: -1.658

---

---

---

---

---

---

---

---

---

---

- ### Intimacy Deficits Interventions
- Psychoeducation
    - Thinking Errors – Empowers, Increases Responsibility
    - Assertiveness Training/Anger Mgmt- Integrate Emotional Experiences into Everyday Life
    - Challenge to Date (not have serial one night stands) and Communicate (with partner and treatment) While In Treatment

---

---

---

---

---

---

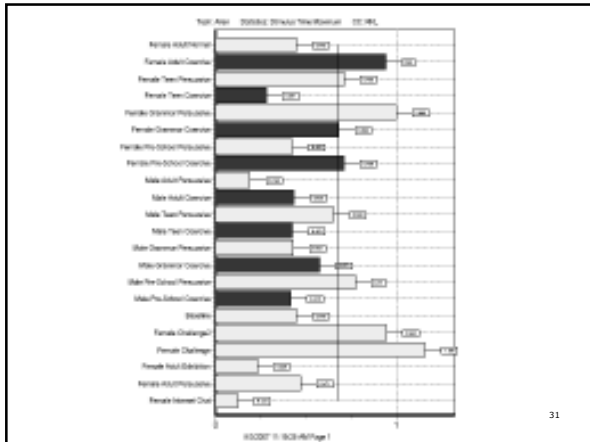
---

---

---

---






---

---

---

---

---

---

---

---

---

---

**Emotional Dysregulation Interventions**

- Standard Cognitive Behavioral Useful as Focus on Self-Discipline Helps
  - Cognitive Distortions
  - Thinking Errors
- Would Also Benefit From Behavioral Interventions Regarding Sexuality As Well

---

---

---

---

---

---

---

---

---

---

**Antisocial Cognitions**

- History of Criminal Behavior
- Coercive > Persuasive (with violence history)

---

---

---

---

---

---

---

---

---

---

### Multiple Dysfunctional Pathways

- The "Pedophilic" Profile
- Typically More Arousal to Adults Than to Children

34

---

---

---

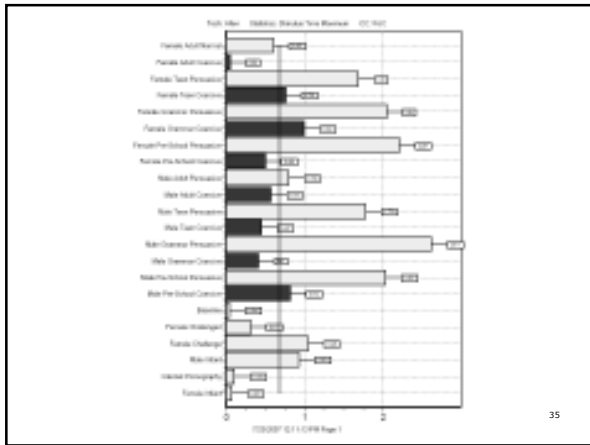
---

---

---

---

---



35

---

---

---

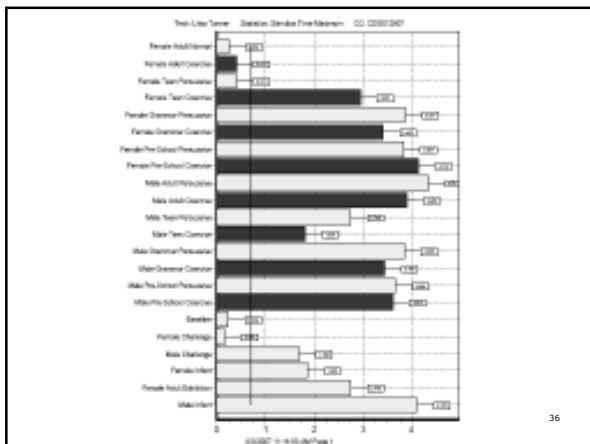
---

---

---

---

---



36

---

---

---

---

---

---

---

---

**Multiple Dysfunctional Pathways Interventions**

- Behavioral
- Developmental
- Attachment
- Emotional Regulation/Integration

37

---

---

---

---

---

---

---

---

**II. Treatment**

- Medical Interventions:
  - Schober et al. 2005
    - Monarch PPG Sensitive to Treatment Effect, Viewing Time Was Not
    - Monarch PPG & Polygraph Results Coincided with One Another
    - Monarch PPG Detected Late Med Administration: Dynamic Risk

38

---

---

---

---

---

---

---

---

**II. Treatment**

- PPG As An Outcome Measure
  - Overall, We Found Depo Lupron to Significantly Reduce Sexual Arousal to Preferred Stimuli
  - However, Research is Often Based on Group Oriented Data
  - Question Often Remains:
    - What Are the Results With This Individual Client?

39

---

---

---

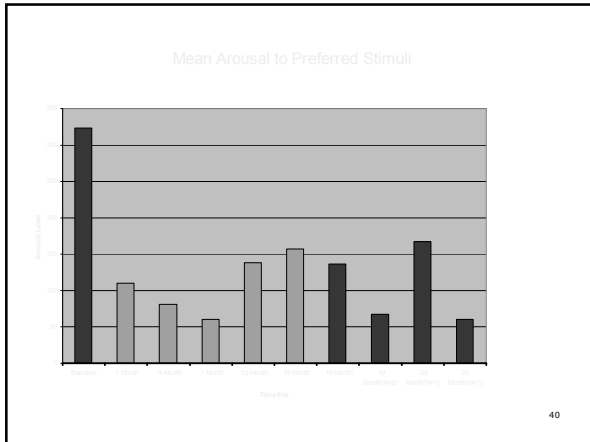
---

---

---

---

---



---

---

---

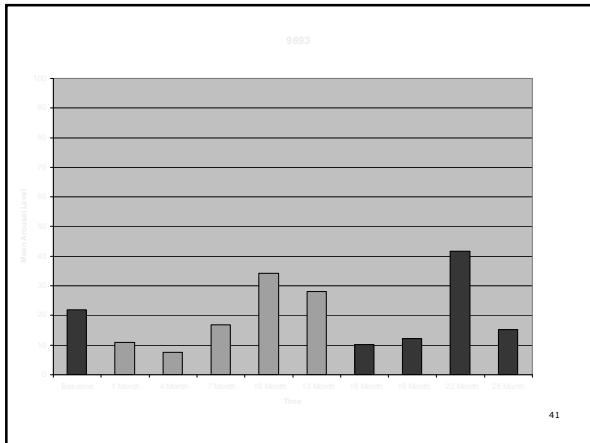
---

---

---

---

---



---

---

---

---

---

---

---

---

### Medication Another Context

- Initial Lupron Study Had Only Five Subjects
- Data from a High Risk Residential Setting

42

---

---

---

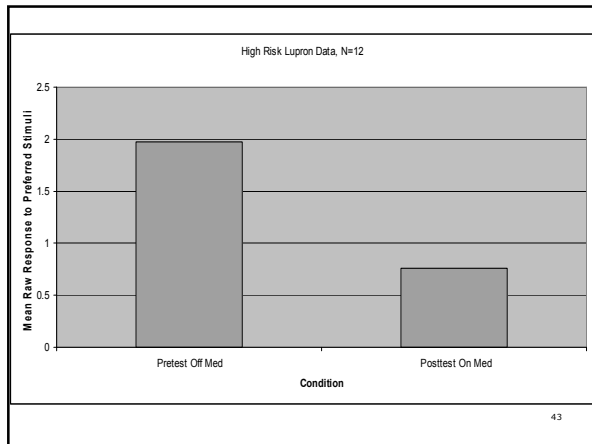
---

---

---

---

---



---

---

---

---

---

---

---

---

## II. Treatment

- Behavioral Interventions
  - Long History of PPG Use for Treating Deviant Sexual Arousal (arousal to younger children)
  - Clear *Behavioral* Dependent Variable
  - PPG Methodology Typically Provides Raw (Treatment) & Transformed (Assessment & Classification) Data

44

---

---

---

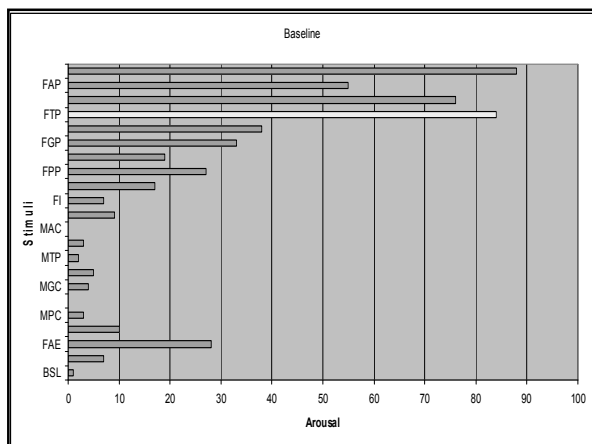
---

---

---

---

---



---

---

---

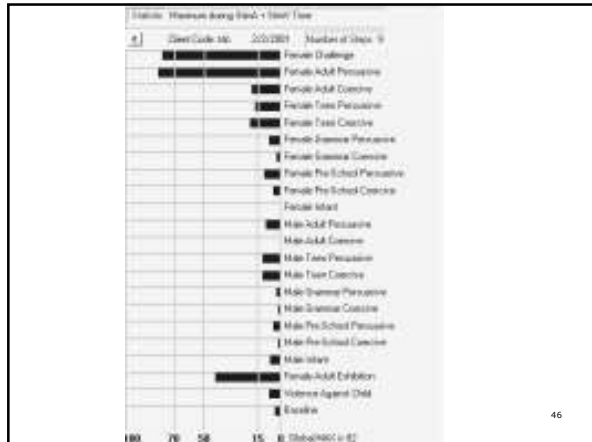
---

---

---

---

---




---

---

---

---

---

---

---

---

---

---

---

---




---

---

---

---

---

---

---

---

---

---

---

---

## II. Treatment

- Cognitive Behavioral Treatment
  - PPG, as Most Blatantly Sexual Test, Counters Client Avoidance of Sexuality
  - PPG Results Can Also Challenge Client on Openness About Sex as Well as About Deficits in Healthy Sexuality (Intimacy Deficits & Deviant Scripts)
  - Lower Risk Clients With Sexual Partners Can Show Changes w/o Behavioral Interventions

---

---

---

---

---

---

---

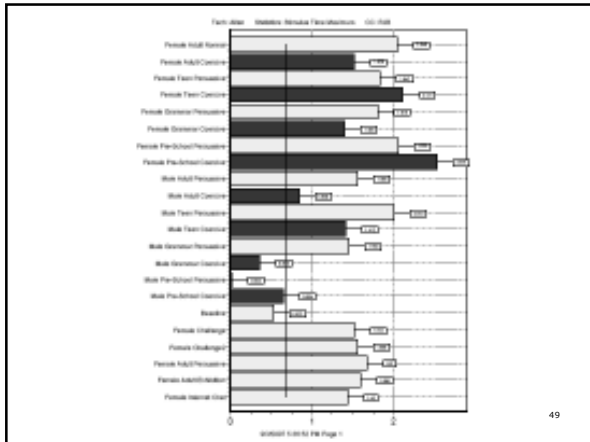
---

---

---

---

---




---

---

---

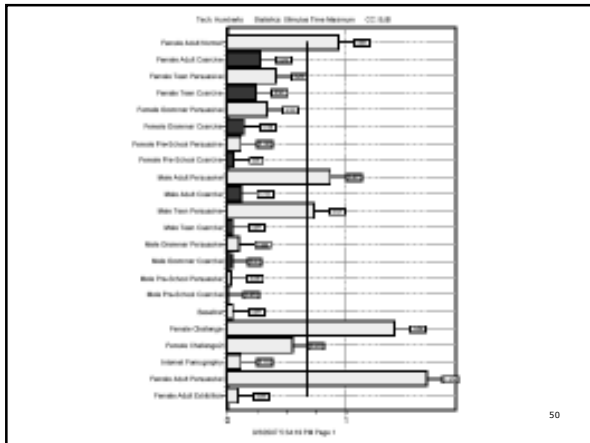
---

---

---

---

---




---

---

---

---

---

---

---

---

**II. Treatment**

- Treatment Effects Can Also Be Observed from Object Relations Oriented Work
- Client in Mid-20's That Was Enmeshed with Mother.
- It Was Judged That He Had Successfully Dealt With This Issue, So Update Testing Was Indicated

---

---

---

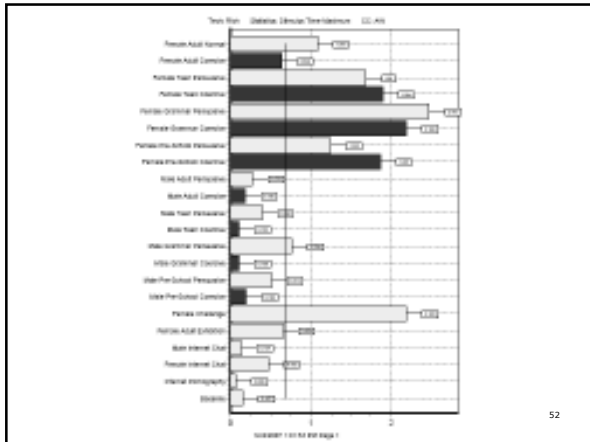
---

---

---

---

---




---

---

---

---

---

---

---

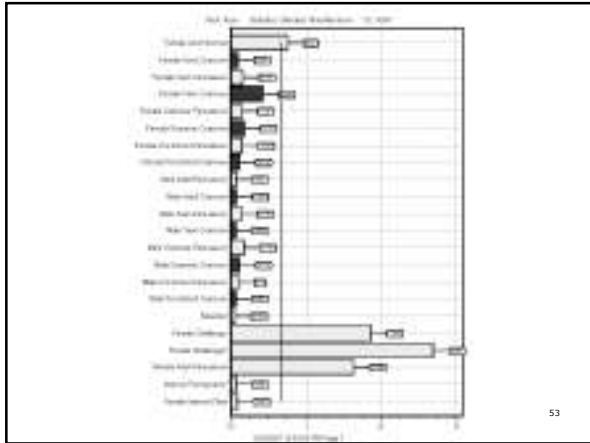
---

---

---

---

---




---

---

---

---

---

---

---

---

---

---

---

---

**II. Treatment**

- Deviance Differential:
  - Initial: -1.7213
  - Post test: 0.6759

---

---

---

---

---

---

---

---

---

---

---

---

### III. Barriers to Use of PPG

- Ninth Circuit Court Decision
  - Based on Old Descriptions of PPG
  - Does Not Include Replicated Empirical Link to Sexual Recidivism
  - Confused Legal Contexts of Guilt/Innocence with Release Conditions With Known Offenders
  - Inflammatory Instead of Probative
  - 9<sup>th</sup> Circuit is Not a Precedent Circuit

55

---

---

---

---

---

---

---

---

### III. Barriers to Use of PPG

- Marshall 2006 Critique of PPG
  - Test Retest Had Serious Credibility Problems
    - Test-Retest Typically Done w/ No Interventions
    - As Seen Earlier, Interventions Can Cause Changes That Are Not Threats to Reliability
    - Marshall's Group Presented at ATSA and They are Following Monarch 21 Lead With Regard to Standardization

56

---

---

---

---

---

---

---

---

### IV. Future Directions

- Postulation of New Theory, What PPG Measures Beyond Age Preferences
- Normative Scoring (ATSA, 2007)
- I/G Gauges
- Lower Significance Levels Likely
- Automated Narrative and Analysis

57

---

---

---

---

---

---

---

---